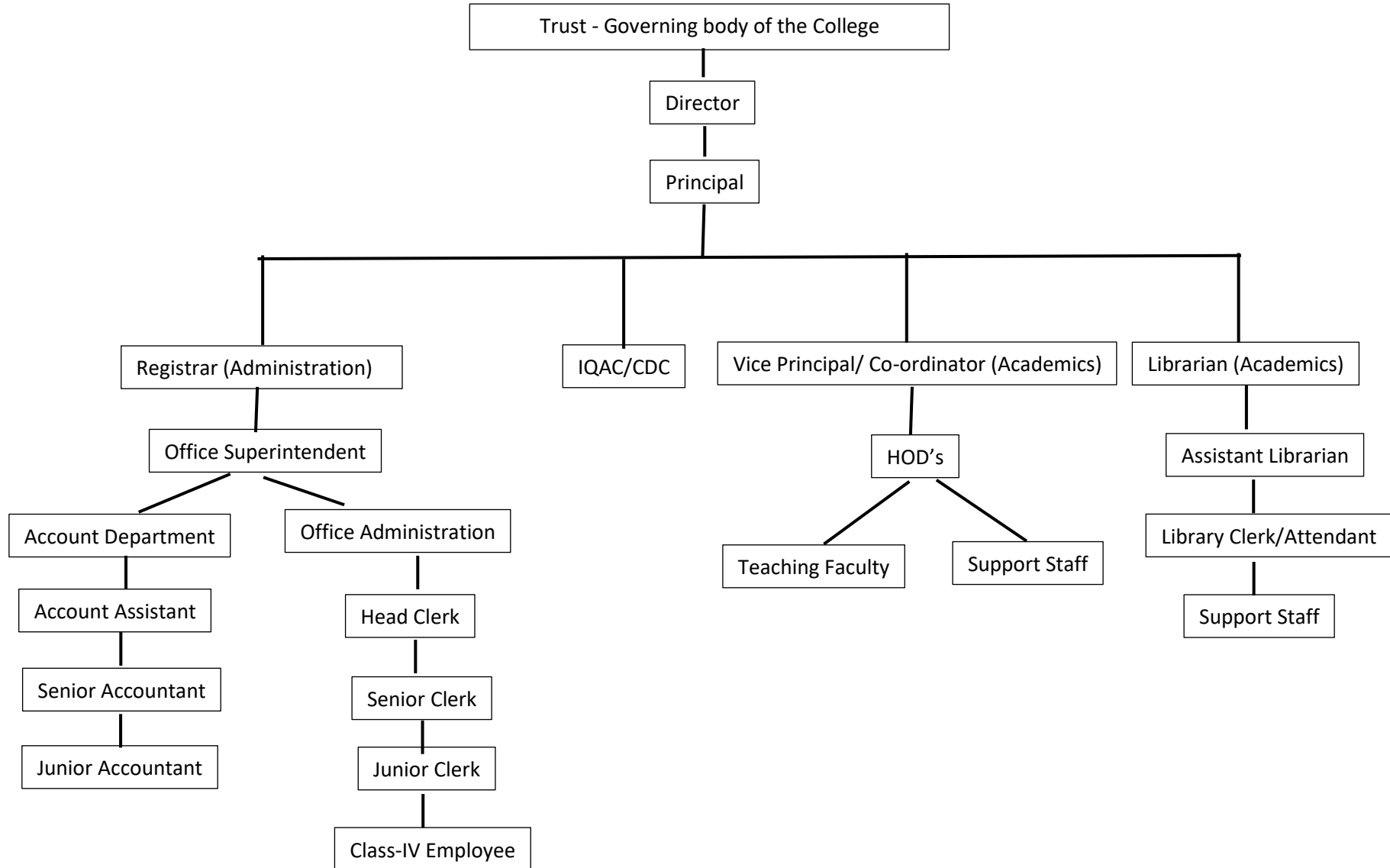


Smt. P. N. Doshi Women's College

Organogram



Organogram Details:

Composition of internal quality assurance cell (IQAC):

Management
Principal
IQAC Coordinator
Teachers to represent all levels (Assistant and Associate Professors)
The senior administrative officer (Office Superintendent/Manager)
Student Nominee

Composition of college development cell (CDC):

Management
Principal
IQAC Coordinator
One HOD nominated by the Principal
Teachers (Elected)
One Non-Teaching Staff (Elected)
Student Nominee